

Product Trial Report

GROWER DETAILS	FIELD DETAILS	PLANTING/HARVEST DETAILS	
Grower:	Total Acres: 141.70	Crop: Corn	Report Date: 01/05/2024
City & State: CRESTON, NE	Soil Type: Please see Soil Type Map	Plant Date: 05/10/2023	Harvest Year: 2023
Zip Code: 68631	Tile: Spot Tile	Row Spacing: 30"	Crop: Corn
	Irrigation: Pivot	Planting Depth: 2.00	Trial Name: Soil Boost (3-year Project)
	Fall Tillage: No Till	Harvest Date: 10/27/2023	Trial Type: Preplant
	Spring Tillage: Vertical/Min Till	Hybrid: 16z26q	
		Seed Company: Brevant Seeds	
		Population: 35400	

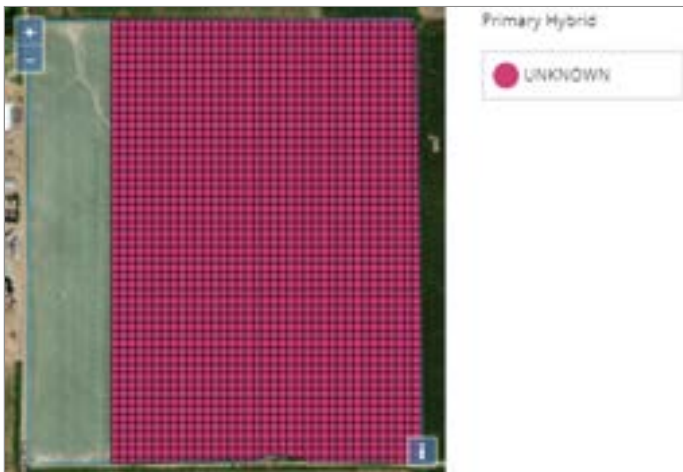
Field Map



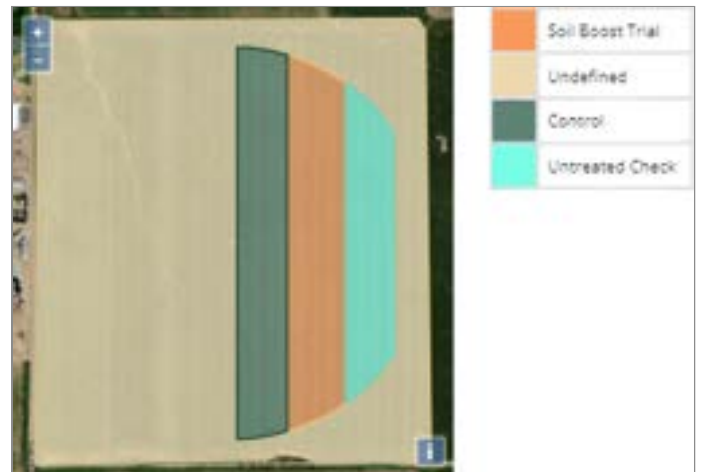
Soil Type



Planting Map



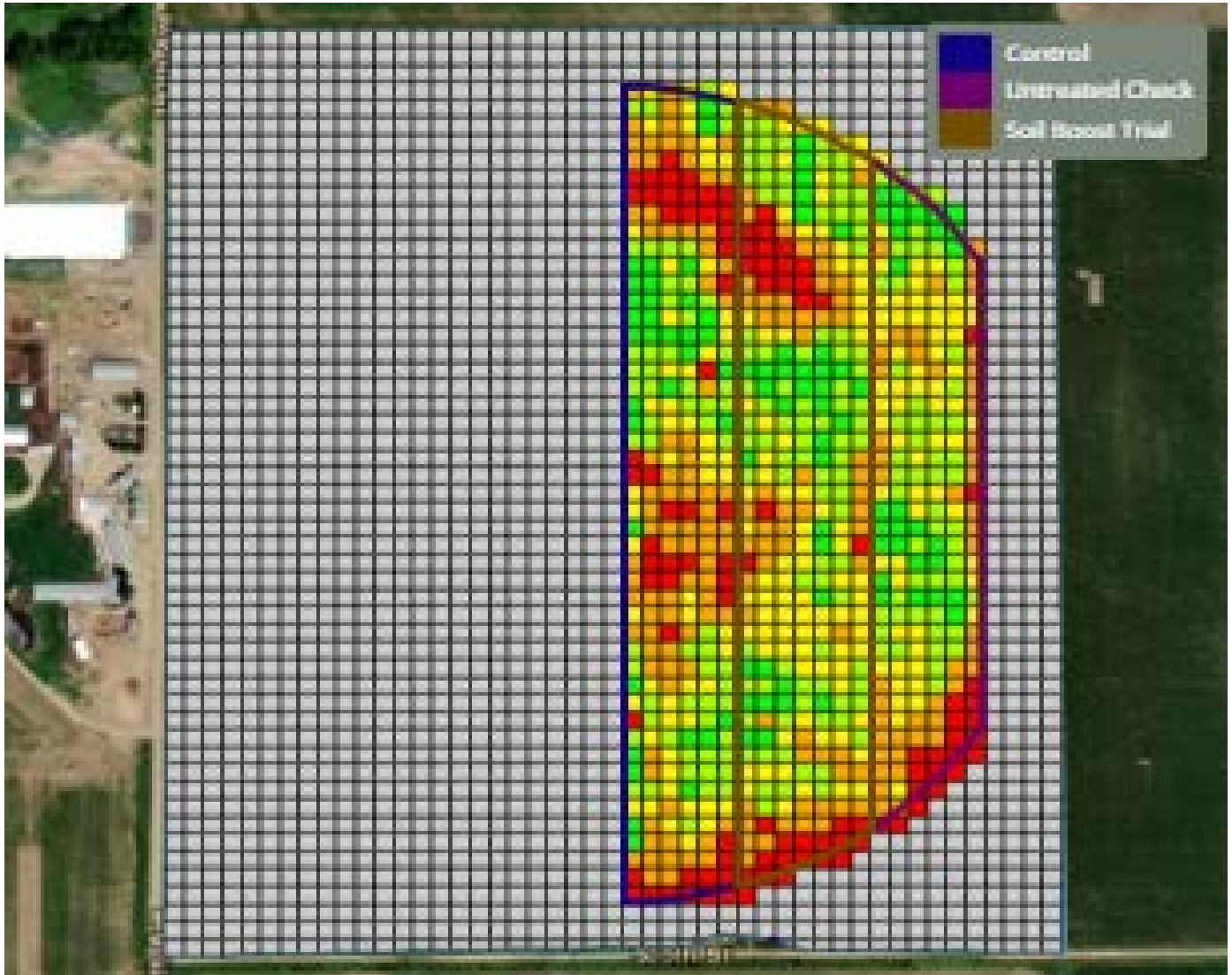
Trial Zones



Product Trial Report

Yield Results Data

High Level Yield Heat Map



This data was filtered based on -1 / +1 St Dev

Yield Summary BPA	
<i>Location</i>	<i>Yield</i>
Control	357.03
Soil Boost Trial	362.44
Yield Response	5.41

Yield Summary BPA	
<i>Location</i>	<i>Yield</i>
Untreated Check	362.86
Soil Boost Trial	362.44
Yield Response	-0.42

Yield Values	
○	No data found
●	267.6 - 334.7
●	335 - 358.5
●	358.5 - 371.1
●	371.1 - 381.4
●	381.5 - 394.8

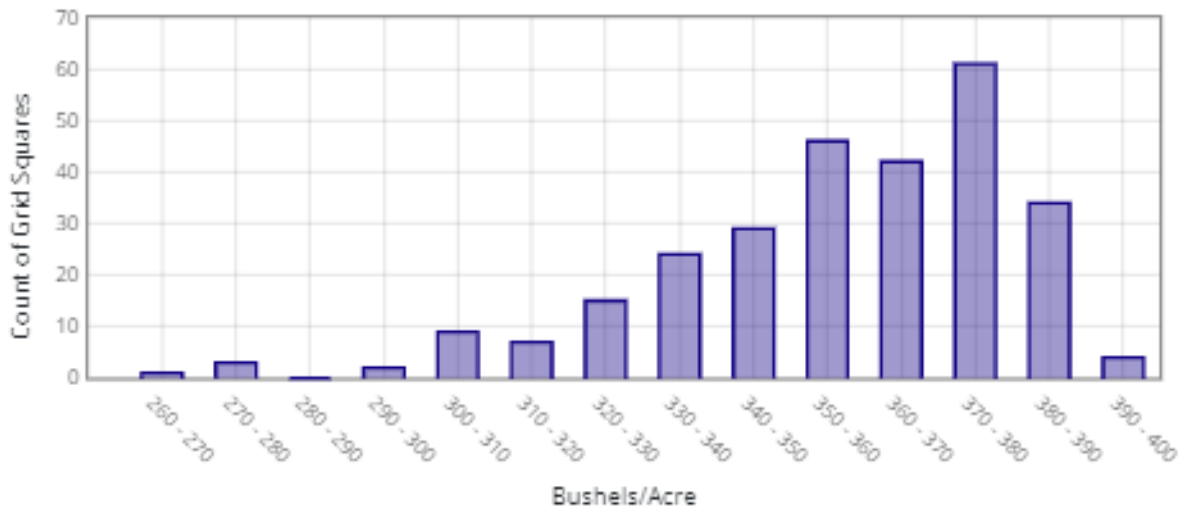
Product Trial Report

Product Trial Comments: This trial had 2 different control locations. SoilBoost out yielded the Control by 5.41 bu./acre and the Untreated Check was a -0.42 bu./acre yield response. To tighten up yield data points, -1/+1 Standard Deviation measurement method was used for this study. Please review the pictures below to review the significant improvements in soil compaction reduction from the penetrometer readings.

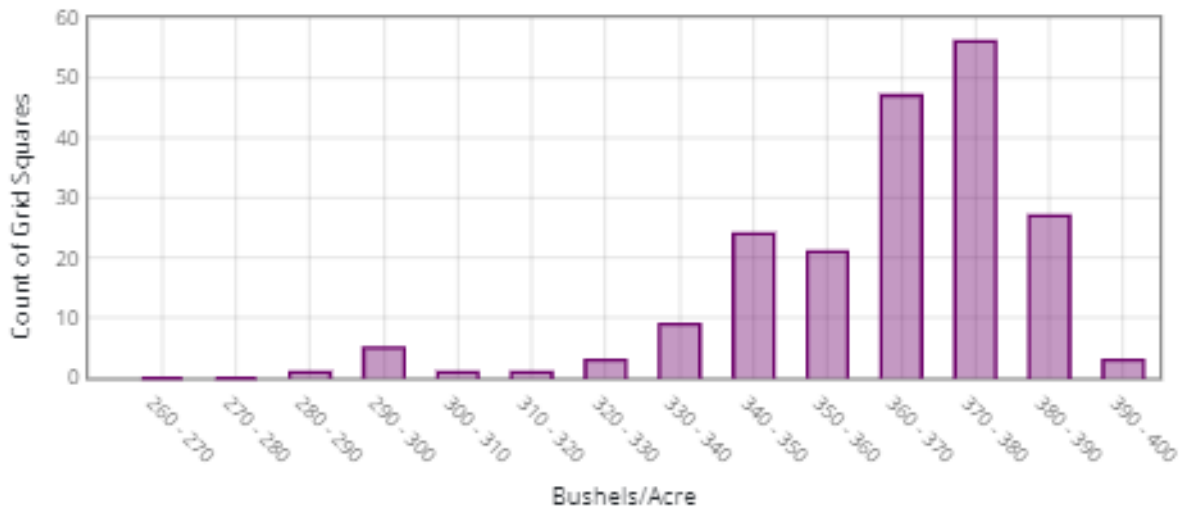
Application Date and Details: Application Date - 4/27/2023 Soil Boost was applied at 125 lbs/acre rate

Product Trial Report

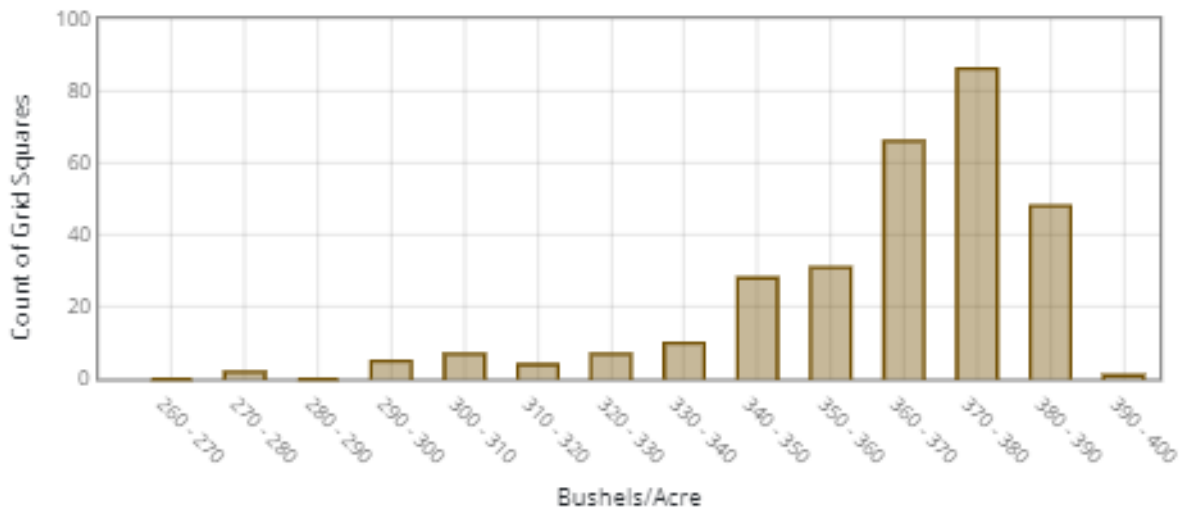
Control



Untreated Check

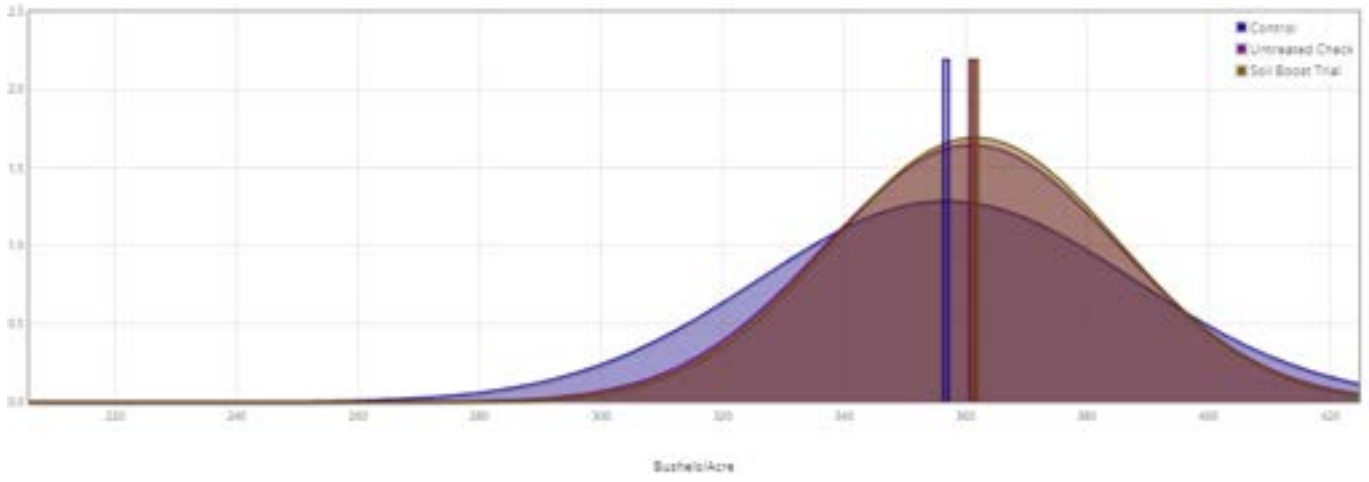


Soil Boost Trial



Product Trial Report

Normal Curve Distribution



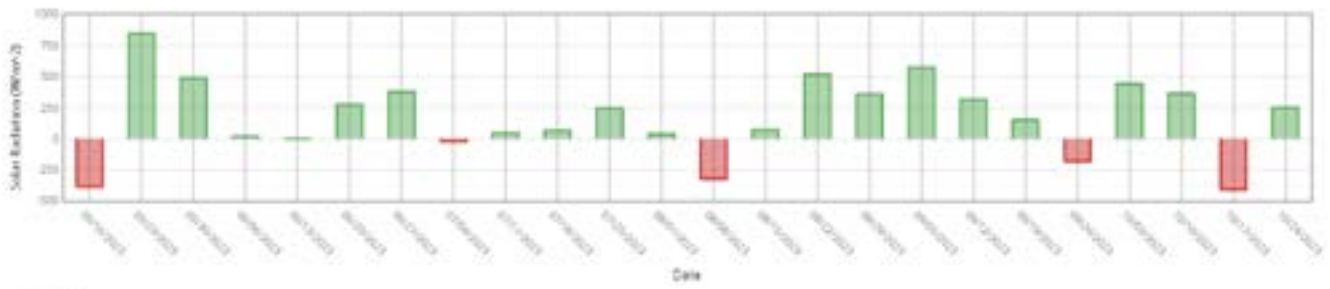
Product Trial Report

Trial Location Weather Data vs 5 Yr Avg

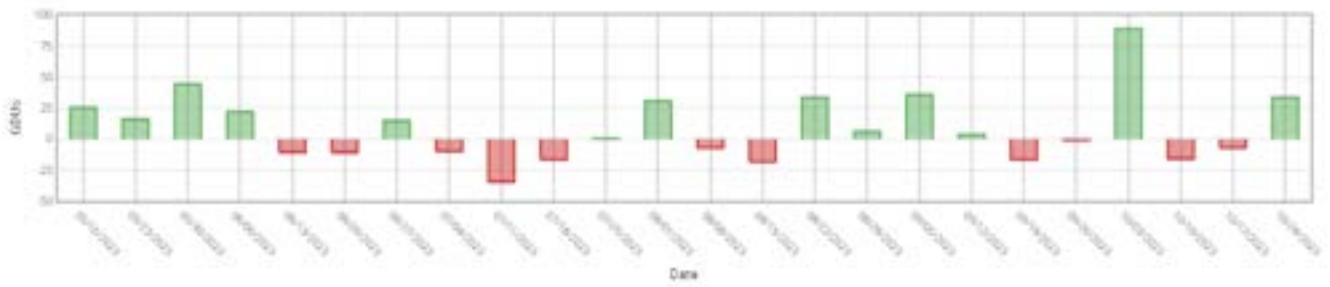
Historical Averages based on past years

Cumulative Week over Week

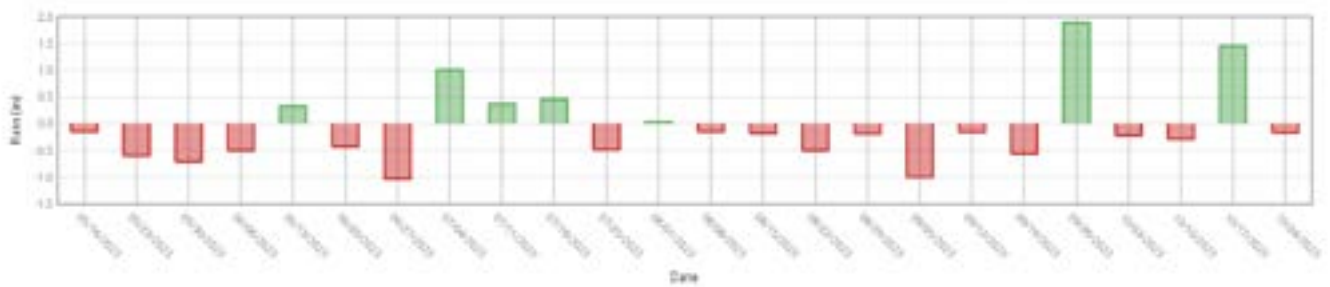
Sunlight



Heat (GDUs)



Rain



Product Trial Report

Additional References



Non Treated Corn Pen. reading 6.5 Average



Treated Corn Pen. reading 8.5 Inches Average



Treated on Left and Untreated on Right. No difference in root development. Ground is extremely hard on both digs. Very hard to get roots to come out in a good clump because of hardness of soil.



Non Treated End of Year with moisture in the ground. 12.5" depth to 200 lbs resistance

Product Trial Report



Treated End of Year with Moisture in the ground. 18.25" depth to 200 lbs resistance